



## TRE House

Chatsworth, CA 91311

(888) 991-7471

Sample 522-022822-001

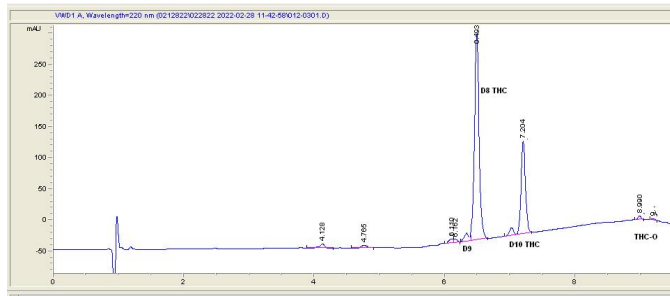
TRE House- Lemon Jack- Sativa

Sample Submitted: 02-28-2022; Report Date: 02-28-2022

## TRE House- Lemon Jack- Sativa

Distillate

## Chromatogram



## Cannabinoid Profile



## Cannabinoid Profile by HPLC

0.11%

Calculated THC Yield

0.00%

Calculated CBD Yield

89.61%

Total Cannabinoids

Cannabinoid	% wt	mg/g
Delta-8-THC	70.67	706.7
THC	0.11	1.1
Delta-10-THC	18.83	188.3
<b>Total Cannabinoids</b>	<b>89.61</b>	<b>896.1</b>
<b>Calculated THC Yield</b>	<b>0.11</b>	<b>1.10</b>
<b>Calculated CBD Yield</b>	<b>0.00</b>	<b>0.00</b>

Calculated Maximum THC Yield =  $\text{THC} + 0.877 * \text{THCA}$ Calculated Maximum CBD Yield =  $\text{CBD} + 0.877 * \text{CBDA}$ 

**Notes:** THC-O 1.2% based on percentage in the chromatogram; no reference standard is available.

## Marin Analytics, LLC

250 Bel Marin Keys Blvd, Suite D4  
Novato, CA 94949

415-936-6477 / sarabiancalana1@gmail.com

Sara Biancalana  
Chief Scientist

This sample has been tested by Marin Analytics, LLC using valid testing methodologies and a quality system. Values reported relate only to the sample tested. Marin Analytics, LLC makes no claims as to the efficacy, safety or other risks associated with any detected or non-detected levels of any compounds reported herein. This Certificate shall not be reproduced except in full, without the written approval of Marin Analytics, LLC.