



D8 CBG-3

Sample ID: G1A0508-10

Matrix: Industrial Hemp

Test ID: 5009927

Source ID:

Date Sampled: 01/29/21

Date Accepted: 01/29/21

C Oregon LLC

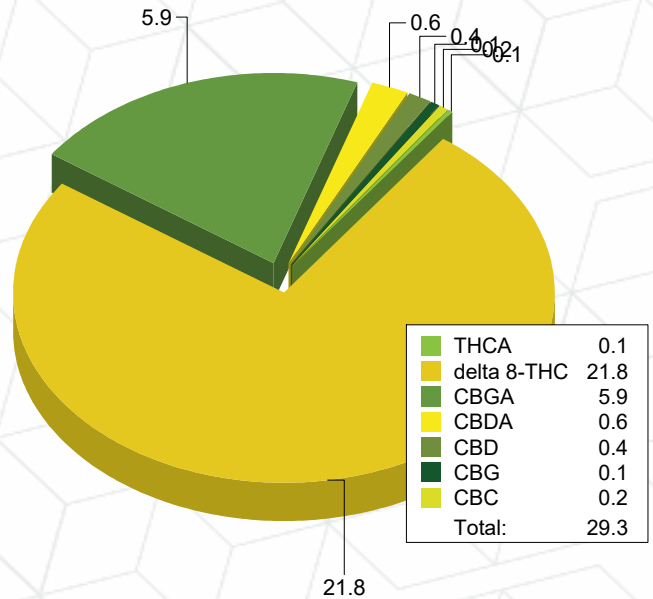
Potency Analysis

Date/Time Extracted: 02/01/21 13:59

Analysis Method/SOP: 215

Batch Identification: 2106009

| Cannabinoids | LOQ (%) | % by Wt. | mg/g | Cannabinoids Profile |
|--------------|----------|----------|-------|----------------------|
| Total THC | 0.009080 | 0.1059 | 1.059 | |
| Total CBD | 0.002075 | 0.9843 | 9.843 | |
| Total CBG | 0.003160 | 5.352 | 53.52 | |
| THCA | 0.002920 | 0.1208 | 1.208 | |
| delta 9-THC | 0.009080 | < LOQ | < LOQ | |
| delta 8-THC | 0.04670 | 21.83 | 218.3 | |
| THCV | 0.005055 | < LOQ | < LOQ | |
| THCVA | 0.001885 | < LOQ | < LOQ | |
| CBD | 0.001555 | 0.4216 | 4.216 | |
| CBDA | 0.002075 | 0.6417 | 6.417 | |
| CBDV | 0.005000 | < LOQ | < LOQ | |
| CBDVA | 0.001640 | < LOQ | < LOQ | |
| CBN | 0.002990 | < LOQ | < LOQ | |
| CBG | 0.003160 | 0.1321 | 1.321 | |
| CBGA | 0.003160 | 5.945 | 59.45 | |
| CBC | 0.008965 | 0.1885 | 1.885 | |



Total THC = delta 9-THC + (THCA * 0.877)

Total CBD = CBD + (CBDA * 0.877)

Total CBG = CBG + (CBGA * 0.878)

LOQ=Limit of Quantification, the lowest measurable concentration of an analyte.



Russell Kuhfeld

Russell Kuhfeld
Quality Officer - 2/2/2021

All QC samples met acceptance criteria of the method; data available upon request. These results relate only to the sample included on this report. The report may not be reproduced except in full, without the written permission of Green Leaf Lab.

This is for informational testing and is not compliance testing. Lab results apply to the sample as received.